

Original BMW parts and accessories.



Installation instructions.

Retrofit rear lights facelift.

BMW X1 (F48)

Installation instructions only valid for vehicles before LCI

Retrofit kit number

63 13 2 473 550

Retrofit kit for taillights facelift

Installation time

The installation time for vehicles with LED headlights (SA 5A4) is **approx. 0.75 hours**, for vehicles with halogen headlights **approx. 2.25 hours**. These can vary depending on the condition and equipment of the vehicle.

The time required for programming / coding is not taken into account in the specified installation time.

The billing of the total costs for the programming time must be taken into account when calculating the retrofitting costs (a billing via warranty is not allowed).

Important instructions

These installation instructions are primarily intended for use in the BMW dealership organization and by authorized BMW service companies.

In any case, the target group for these installation instructions is specialist personnel trained on BMW vehicles with the relevant specialist knowledge.

All work must be carried out with the help of current BMW repair instructions, circuit diagrams, maintenance manuals and work instructions in a rational order with the prescribed tools (special tools) and taking into account the applicable safety regulations.

In the event of assembly or functional problems, limit troubleshooting to approx. 0.5 hours for mechanical or 1.0 hours for electrical work.

In order to avoid unnecessary additional work and to save costs, please send a request to the parts technical support.

Please provide the following:

- chassis number,
- part number of the retrofit kit,
- exact description of the problem,
- work steps already carried out.

Please do not archive the printout of these installation instructions. The current version can be found in the ETK.

Pictograms



Identifies notices that draw your attention to dangers. Identifies information that draws your



attention to special features.



Denotes the end of the caution or note text.

Assembly instructions

When laying cables and / or lines, make sure that they are not kinked or damaged. BMW AG will not reimburse any costs incurred as a result.

Additionally laid cables and / or lines must be fastened with cable ties. If the specified PIN chambers are occupied, bridges, double crimps or parallel connections must be carried out.

All images show LHD vehicles; in the case of RHD vehicles, proceed accordingly.

Ordering information

The following components are not part of the retrofit kit and must be ordered separately (see EPC for part number and description):

- 6-pin socket housing SW **E** (2 pieces)
- Blue blind grommet **F** (4 pieces)
- Socket contact MCON 2.8 ELA **G** (4 pieces)
- Green single conductor seal **H** (4 pieces)
- MQS ELA socket contact **I** (4 pieces)
- Single conductor seal light blue **J** (4 pieces)
- Cover gutter on the left **K**
- Cover gutter on the right **L**.

Additionally for vehicles with halogen headlights:

- MQS socket contact **M** (2 pieces)
- Cable SW / VI 0.75 mm² **N** (10 meters)
- Cable ties **O** (15 pieces)

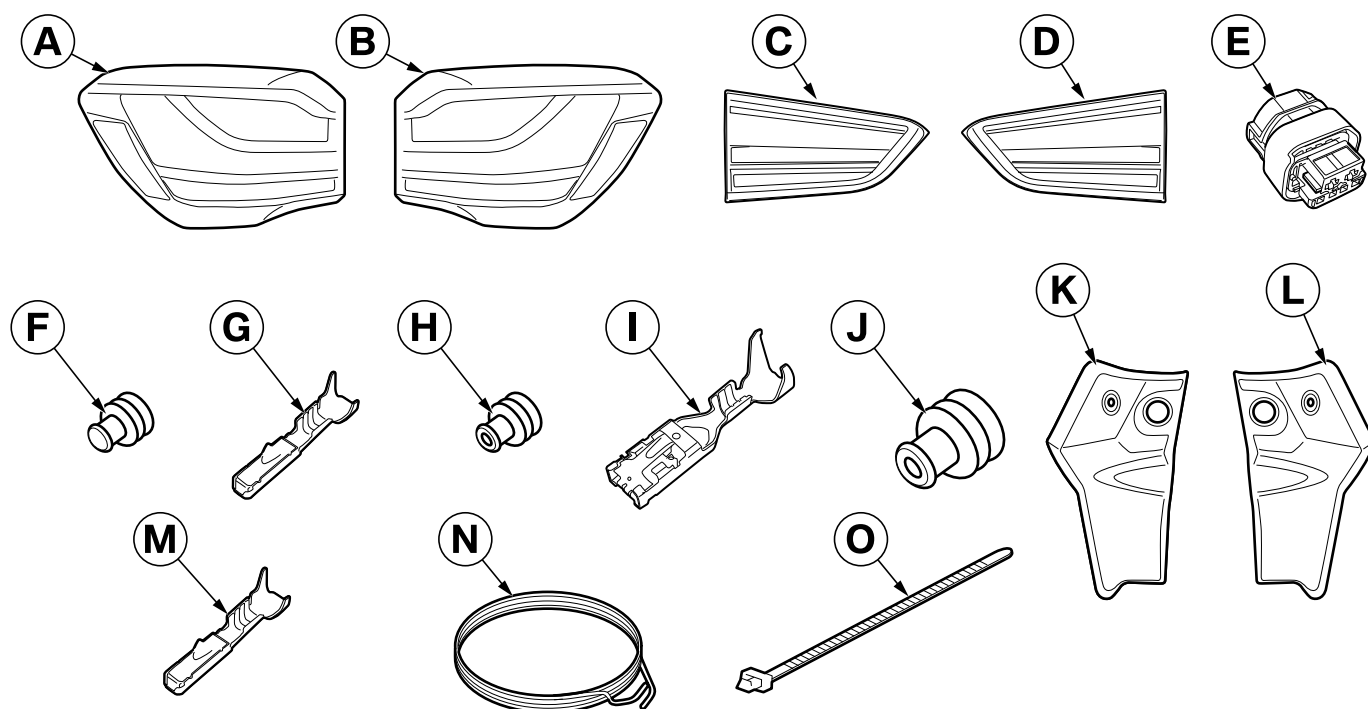
Required special and special tools

Information on the special tools required can be found in the respective ISTA / AIR repair instructions.

contents

chapter	page
1. Parts overview retrofit kit.	4th
2. Preliminary work.	5
3. Connection overview for vehicles with halogen headlights.	6th
4. Connect and install facelift lights in vehicles with halogen headlights.	7th
5. Connect and install facelift lights in vehicles with LED headlights.	9
6. Final work and coding.	10

1. Parts overview retrofit kit



F48 0030 Z

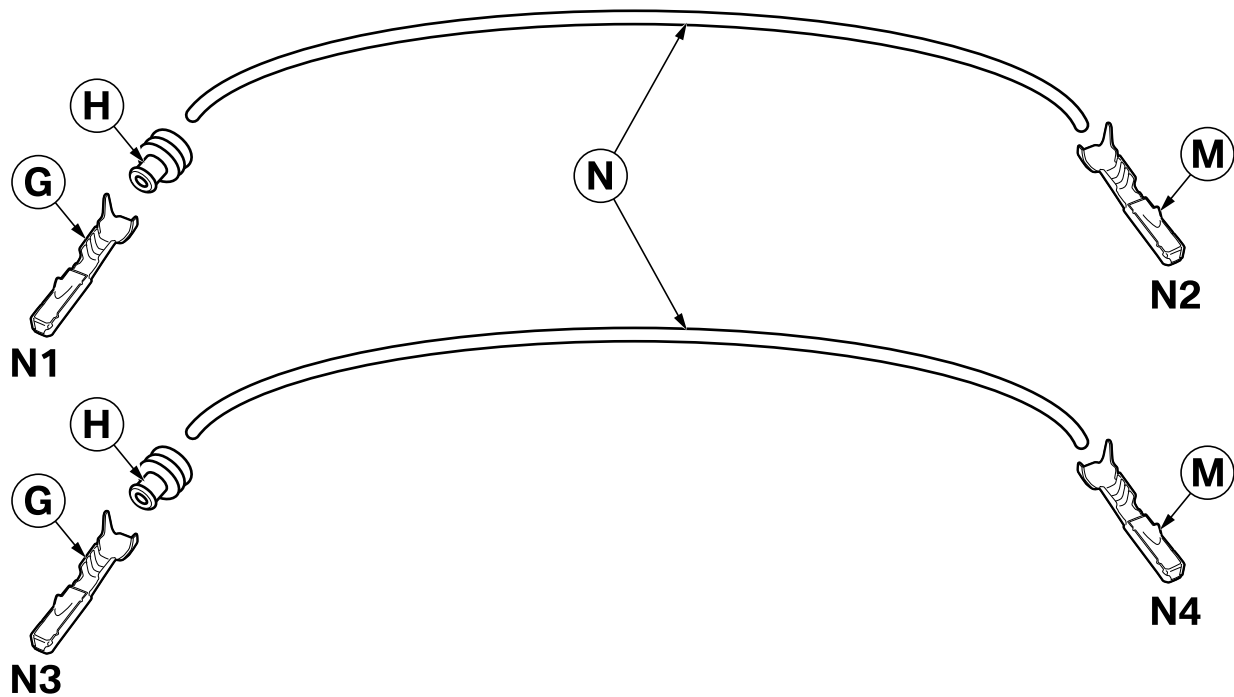
Legend

- A.** Left side wall rear light
- B.** Right side wall rear light
- C.** Left tail light tailgate
- D.** Tail light tailgate right
- E.** 6-pin socket housing SW (2 pieces, not part of the retrofit kit) Blue dummy grommet (4 pieces, not part of the retrofit kit)
- F.** Socket contact MCON 2,8 ELA (4 pieces, not part of the retrofit kit) Single conductor seal green (4 pieces, not part of the retrofit kit)
- G.** Socket contact MCON 2,8 ELA (4 pieces, not part of the retrofit kit) Single conductor seal green (4 pieces, not part of the retrofit kit)
- H.** Socket contact MQS ELA (4 pieces, not part of the retrofit kit)
- I.** Single conductor seal light blue (4 pieces, not part of the retrofit kit) Cover Gully on the left (not part of the retrofit kit)
- J.** Cover gutter on the right (not part of the retrofit kit)
- K.** MQS socket contact (also for vehicles with halogen headlights, 2 pieces, not part of the retrofit kit)
- L.** Cable SW / VI 0.75 mm² (additionally for vehicles with halogen headlights, 10 meters, not part of the retrofit kit)
- M.** Cable ties (also for vehicles with halogen headlights, 4 pieces, not part of the retrofit kit)
- N.**
- O.**

2. Preliminary work

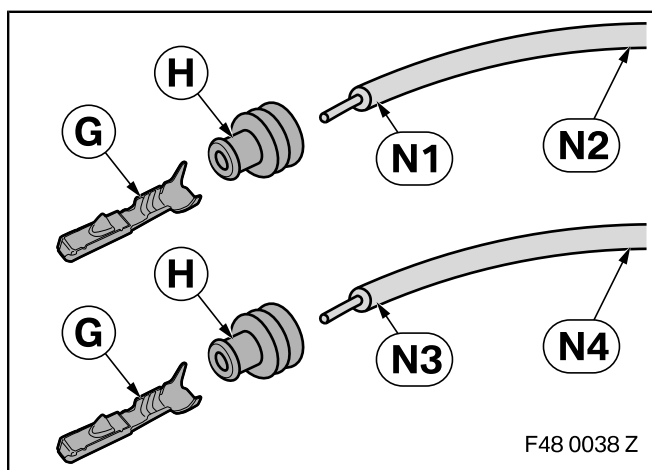
	ISTA / AIR no.
Disconnect the battery negative lead	61 20 900
The following components must be dismantled beforehand	
Left and right rear lights (on the side wall) Left and right rear lights (on the tailgate)	63 21 275
	63 21 279
Additionally for vehicles with halogen headlights	
Luggage compartment wheel arch trim left and right Entrance cover strip, rear (inside) right, B-pillar trim, bottom right	51 47 204
	51 47 030
	51 43 150
Entrance cover strip in front (inside) on the right,	51 47 000
A-pillar trim at the bottom right	51 43 075

3. Connection overview for vehicles with halogen headlights



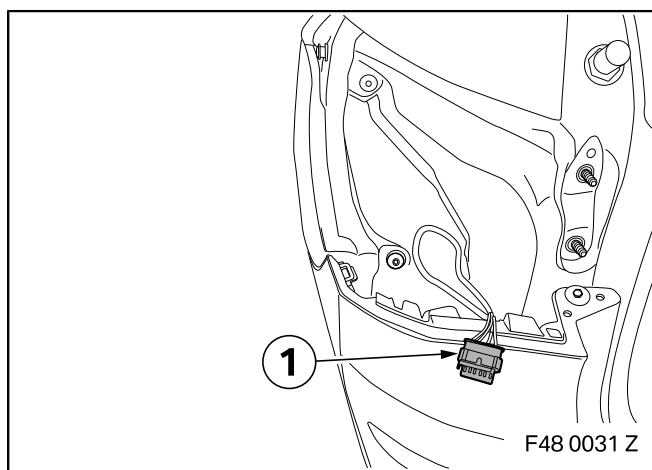
F48 0036 Z

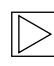
position	designation	signal	Cable color / cross-section	Connection point in the vehicle	Abbreviation / slot
N	Cable SW / VI	---	---	---	---
N1	Open line	SL	SW / VI 0.75 mm²	With book contact G and single conductor sealing H on left side wall rear light A .	E57 * 1B PIN 3
N2	Open line	SL	SW / VI 0.75 mm²	With book contact M . at the BDC	A258 * 5B PIN 42
N3	Open line	SL	SW / VI 0.75 mm²	With book contact G and single conductor sealing H on the right side wall rear light A .	E62 * 1B PIN 3
N4	Open line	SL	SW / VI 0.75 mm²	With book contact M . at the BDC	A258 * 3B PIN 42



Cable SW / VI **N** to lengths of 6 meters for **N1 / N2** and 4 meters for **N3 / N4** cut to length.

Socket contact MCON 2.8 ELA **G** with green single conductor seal **H** at the branches **N1** and **N3** crimp on.



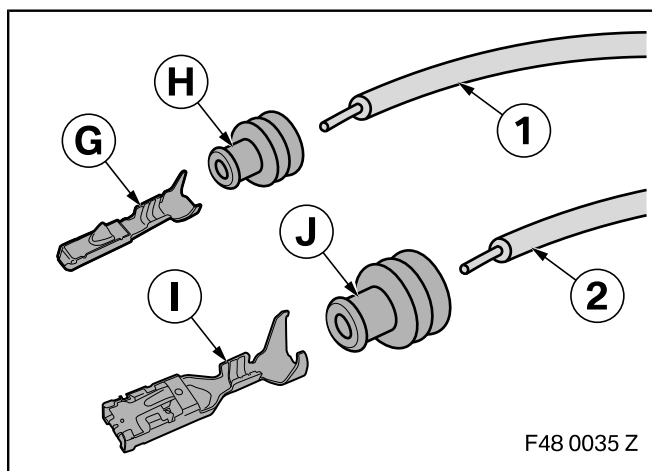
 The connection is described on the left side wall rear light connector. Proceed in the same way on the right-hand side.

Unplug the following lines from the plugs of the rear light on the side panel (1) and disconnect the contacts:

- Line SW / WS / RO (left rear light) and line BL / WS / RO (right rear light) each from PIN 1

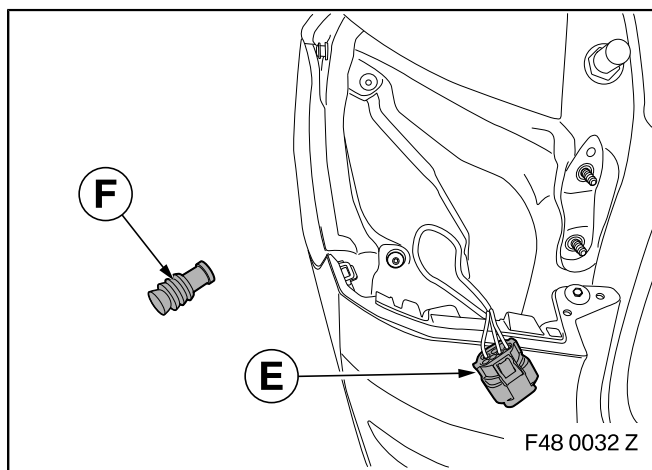
- BR line from PIN 4

- Line SW / GE / RO from PIN 6



Socket contact MCON 2.8 ELA **G** with green single conductor seal **H** Crimp onto line SW / WS / RO (1, left rear light) and line BL / WS / RO (1, right rear light).

Socket contact MQS ELA **I** with single conductor seal light blue **J** Crimp onto cables BR (2) and cables SW / GE / RO (2).



Cables in beech housing as follows **E**. pin in:

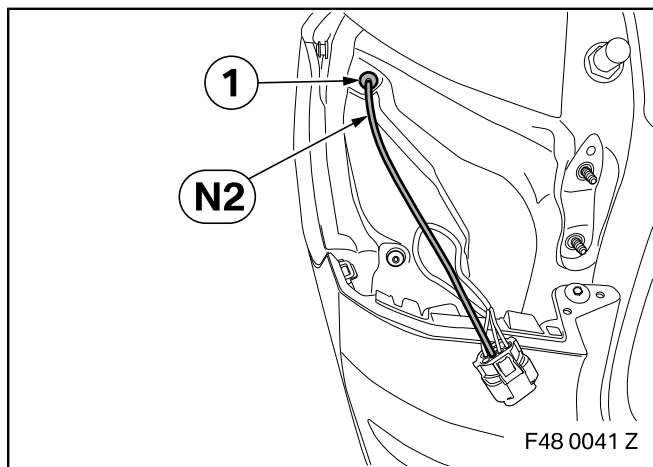
- Line SW / WS / RO (left rear light) and line BL / WS / RO (right rear light) each in PIN 4

- Branch **N1** (left tail light) and **N3** (right rear light) each in PIN 3

- Line BR in PIN 6

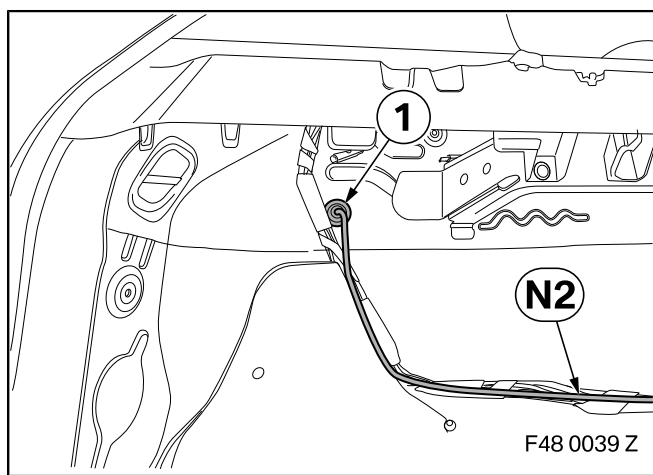
- Line SW / GE / RO in PIN 5

Blind grommets blue **F**. in PIN 1 and 2 of the beech housing **E**. deploy.



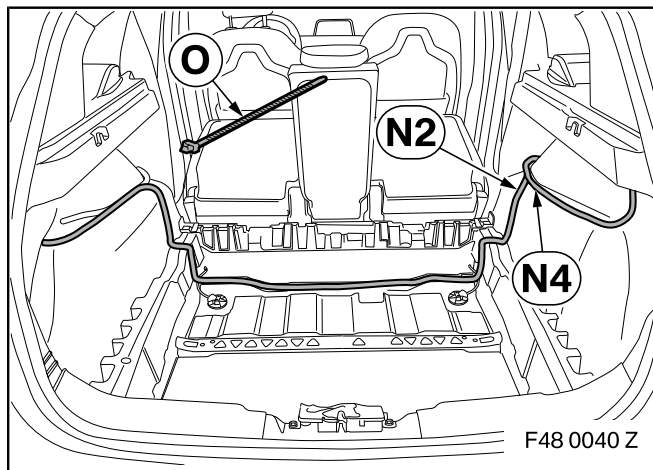
Assembly is described on the left. Proceed in the same way on the right-hand side.

Carefully drill through the rubber grommet (1) with a Ø 2 mm drill and branch N2 pull through.

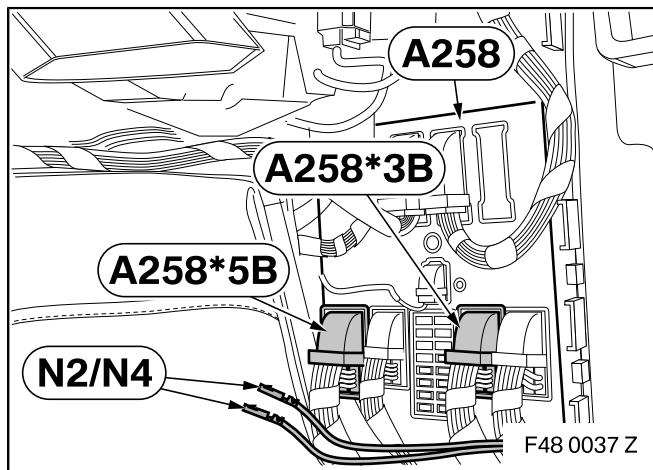


Assembly is described on the left. Proceed in the same way on the right-hand side.

Carefully drill through the rubber grommet in the area of the inner side wall (1) with a Ø 2 mm drill and branch N2 pull through.



Branches N2 and N4 Lay through the luggage compartment as shown and continue along the vehicle wiring harness to the front right footwell and use a cable tie O attach.



Branches N2 and N4 along the right side of the vehicle to the BDC A258 embarrassed.

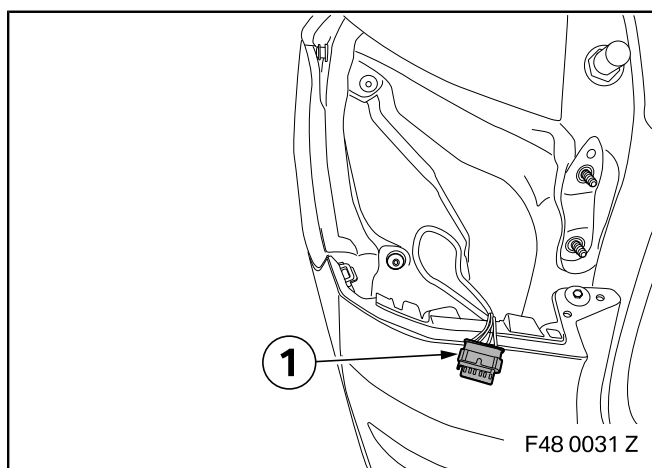
Branch N2 in connector A258 * 5B Pin into PIN 42.

Branch N4 in connector A258 * 3B Pin into PIN 42.

5. Connect and install facelift lights in vehicles with LED headlights

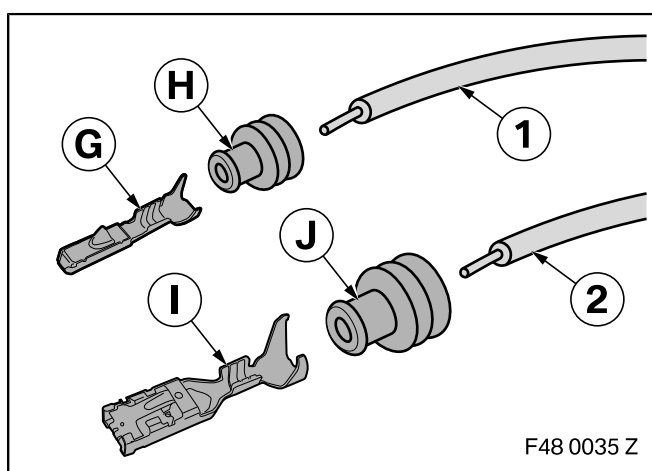


The illustrations show the rear light connector on the left side wall. Proceed in the same way on the right side wall rear light connector.



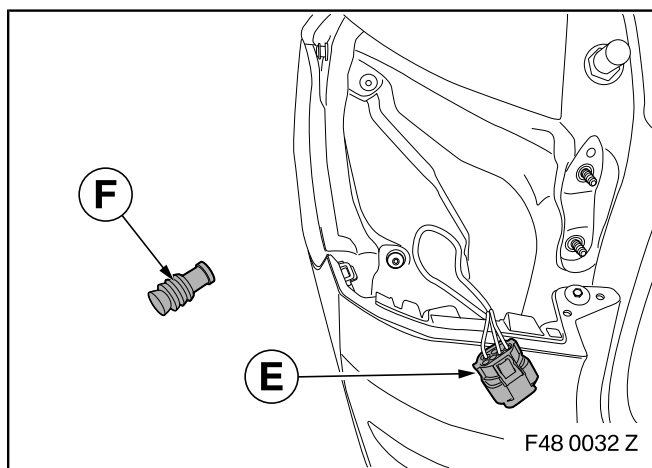
Unplug the following lines from the plugs of the rear light on the side panel (1) and disconnect the contacts:

- Line SW / WS / RO (left rear light) and line BL / WS / RO (right rear light) each from PIN 1
- Line GR / VI / RO from PIN 2
- BR line from PIN 4
- Line SW / GE / RO from PIN 6



Socket contact MCON 2.8 ELA **G** with green single conductor seal **H** Crimp onto cable SW / WS / RO (left rear light), cable BL / WS / RO (right rear light) and cable GR / VI / RO (1).

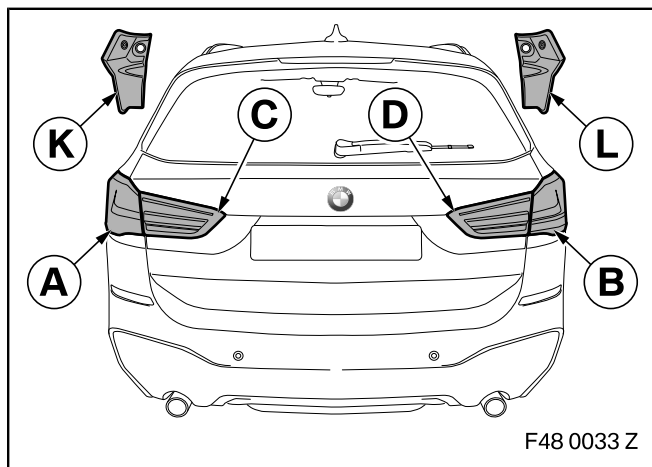
Socket contact MQS ELA **I** with single conductor seal light blue **J** Crimp onto cable BR (2) and cable SW / GE / RO (2).



Cables in beech housing as follows **E**. pin in:

- Line SW / WS / RO (left rear light) and line BL / WS / RO (right rear light) each in PIN 4
- GR / VI / RO line in PIN 3 BR
- line in PIN 6
- Line SW / GE / RO in PIN 5

Blind grommets blue **F**. in PIN 1 and 2 of the beech housing **E**. deploy.



Tail lights side wall **A.** and **B.** with cover gutter on the left **K**, and cover gutter on the right **L**.

Install in accordance with ISTA / AIR 63 12 275.

Tail lights tailgate **C.** and **D.** Install in accordance with ISTA / AIR 63 12 279.

The retrofit system is relevant for programming / coding.

- Connect the vehicle battery
- Connect the battery charger to the vehicle
- Connect the vehicle to the ISTA workshop system
- Call up vehicle programming ISTA
- When working with ISTA, please observe the information in the ISTA application documentation
- Retrofitting "HELC" via the path - **Conversions** - Select and work through the prepared action plan
- If necessary, carry out a vehicle test using the ISTA system and pay attention to the fault memory that has been entered, process it if necessary

- Carry out a function test
- Assemble the vehicle in the same way